



Compression Couplings

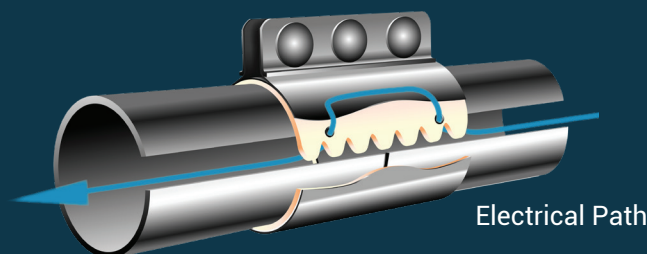
Cutting edge design makes for a lighter coupling with superior performance

REDUCED INSTALLATION TIME UP TO 30%, LIGHTER WEIGHT COUPLING



Sizes: 1 1/2" up to 8" White NBR FDA gasket or Black Rubber SBR gasket

New advanced eyelet design for conductivity



100% Lead Free product

Zinc plated carriage bolt with flange nut (no washer needed)



Tubing and Bends

Short and long radius bends for pneumatic conveying and vacuum systems



- Available in a variety center line radii
- Aluminum, stainless steel, and galvanized
- Sizes range from 1 1/2" OD through 8" OD
- Standard wall thickness, tubing 16,14 and 11 gauge



A collection of flexible hose available, designed for quality and dependability

Extensive selection of precision Wyes, Tees and Laterals

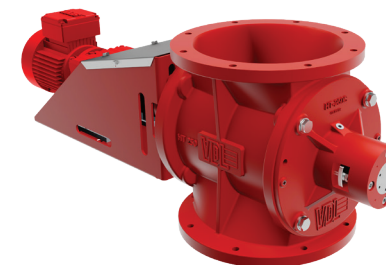


Rotary Valves

Quality machined NFPA 69 Compliant and ATEX Certified Rotary Valves:

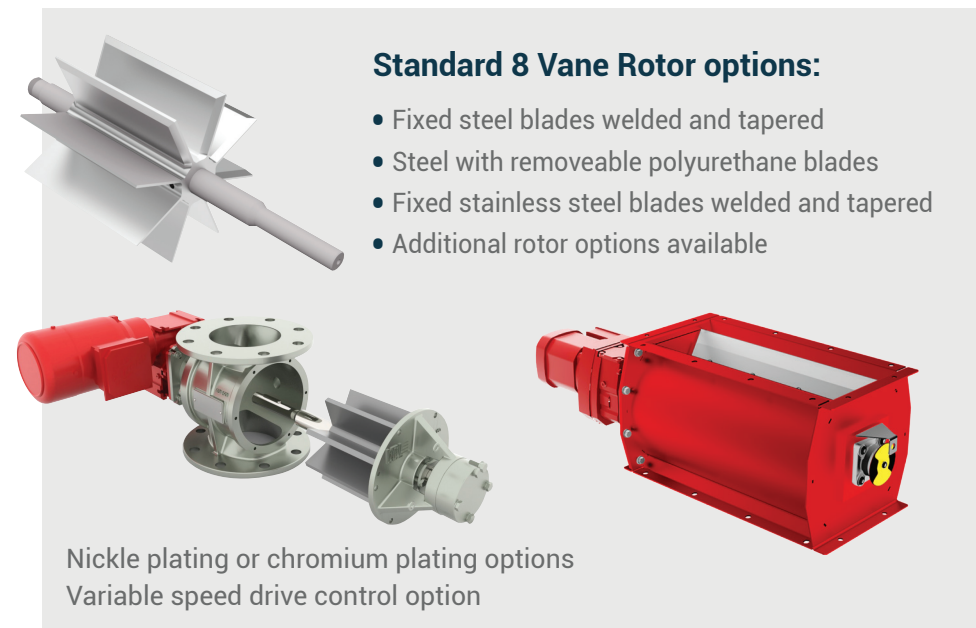
- MD Series:** Feeding, metering and pneumatic conveying applications
- HTS Series:** Dust collectors, cyclones, silos, hoppers and specialized process applications
- HT Series:** Cyclones, screw conveyors, scales, dryers and coolers
- BS Series:** Dust collectors, cyclones, ideal for wood applications

- High temp versions
- Explosion isolation versions
- Quick-clean valve housing design option



Standard 8 Vane Rotor options:

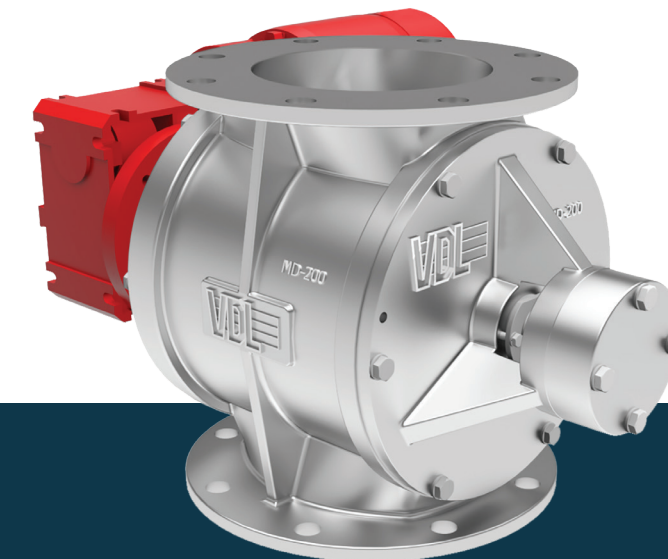
- Fixed steel blades welded and tapered
- Steel with removeable polyurethane blades
- Fixed stainless steel blades welded and tapered
- Additional rotor options available



Nickle plating or chromium plating options
Variable speed drive control option

BOSS Process™

PEOPLE. PARTNERSHIP. PERFORMANCE.



A division of

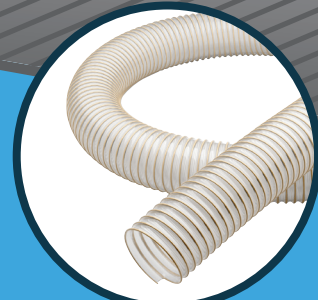
BOSS
PRODUCTS, LLC

ISO 9001:2015
CERTIFIED COMPANY

PRI Registrar
PERFORMANCE REVIEW INSTITUTE

BOSS Process™

PEOPLE. PARTNERSHIP. PERFORMANCE.



Flexible Hose



Industrial Vacuum Components



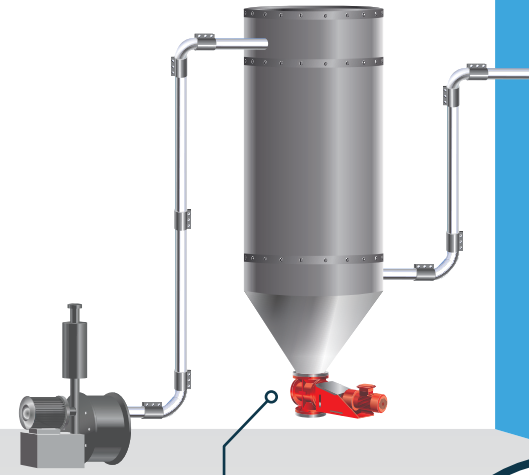
Tubing



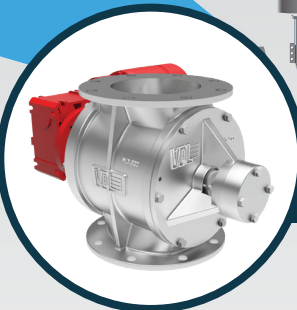
Elbows/Bends



Compression Coupling



Rotary Valve HTS Series



Rotary Valve MD Series

